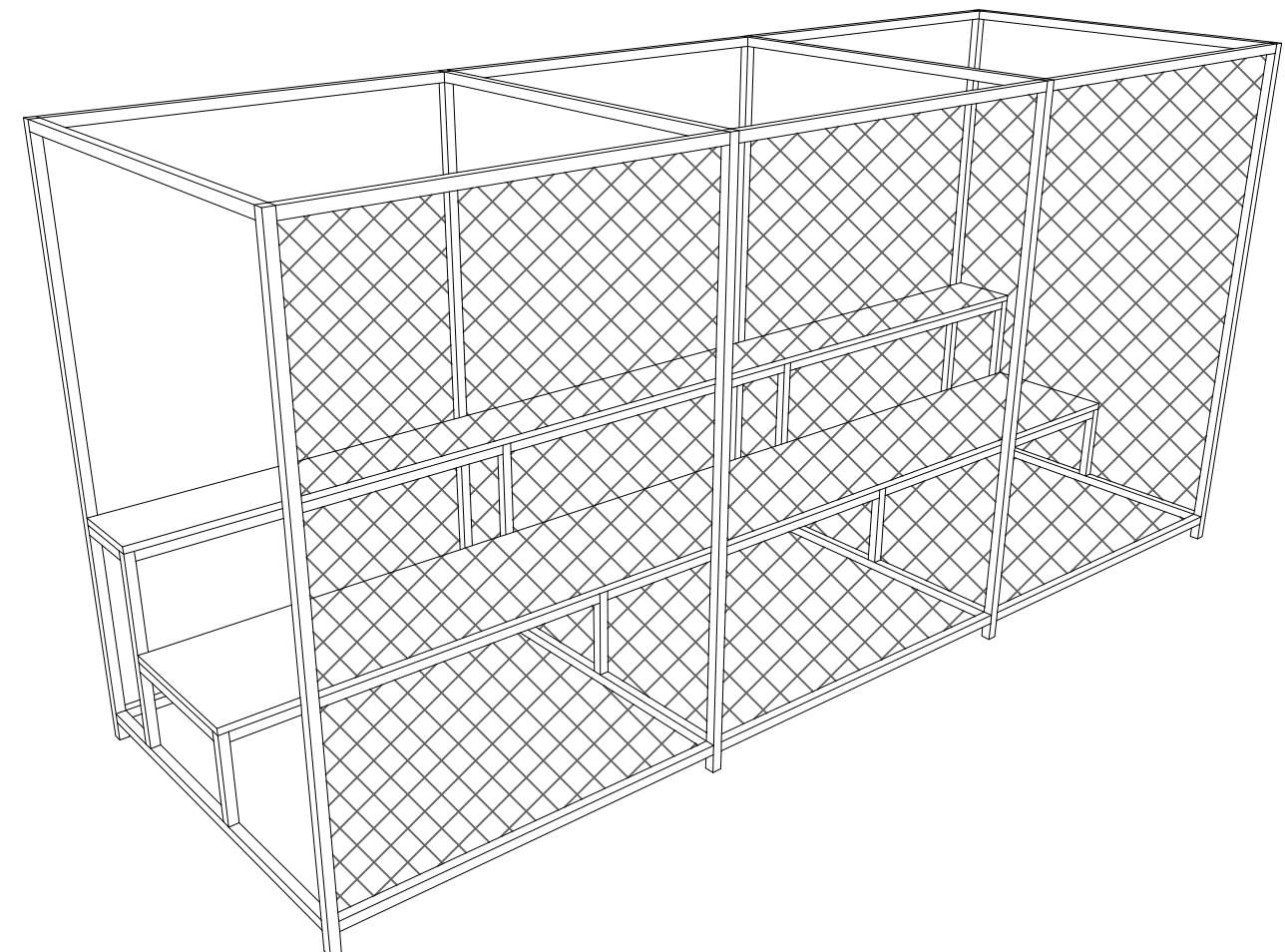
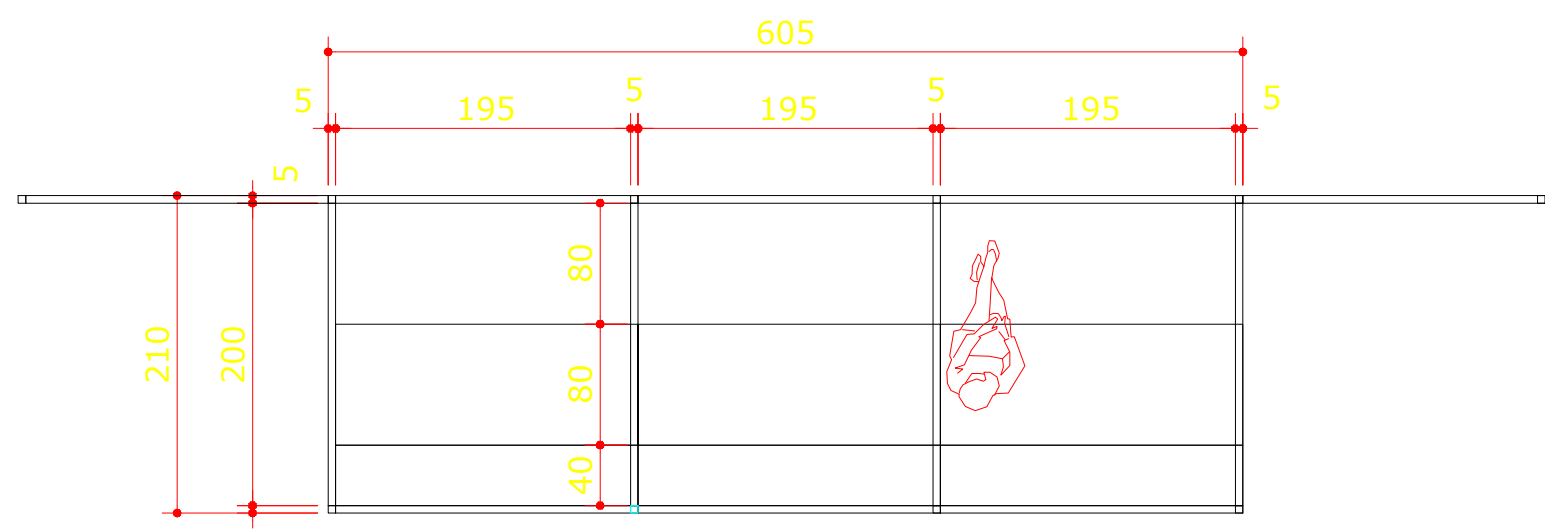


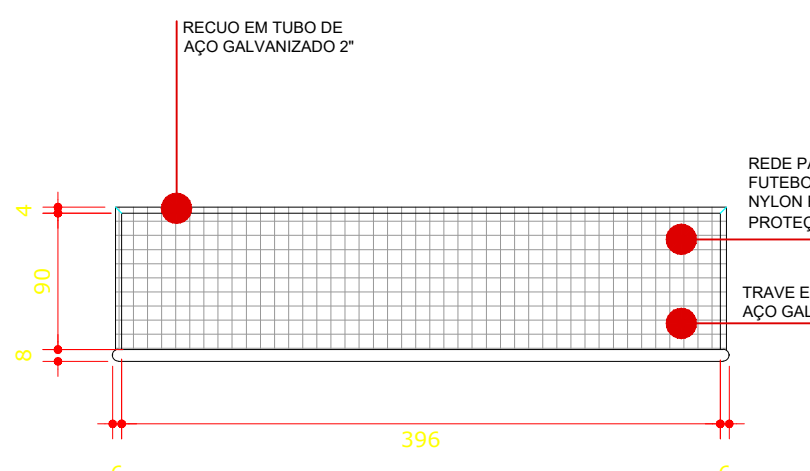
PLANTA DRENAGEM
ESCALA 1:50



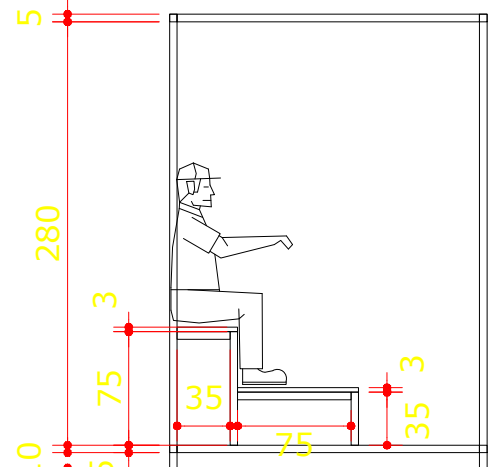
DETALHE D5
PERSPECTIVA ARQUIBANCADA
ESCALA 1/50



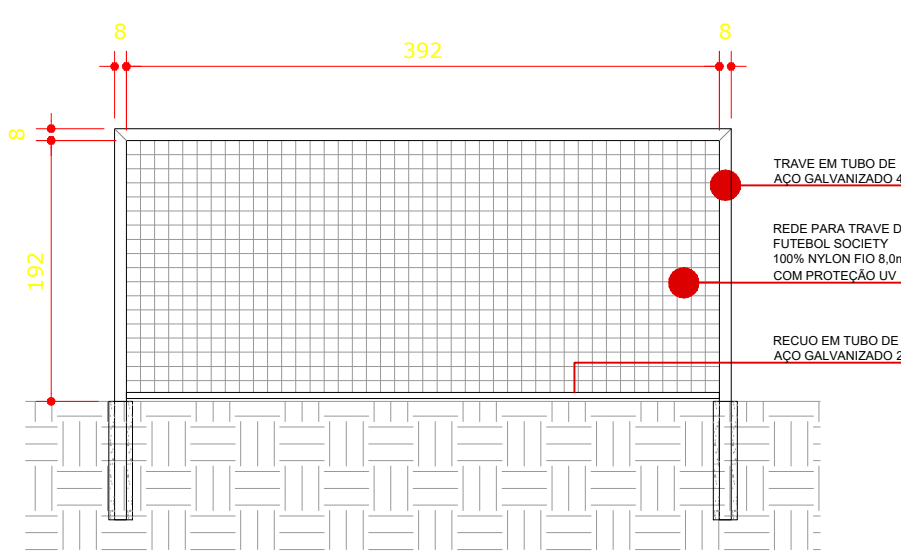
DETALHE D5 - PLANTA
ARQUIBANCADA
ESCALA 1/50



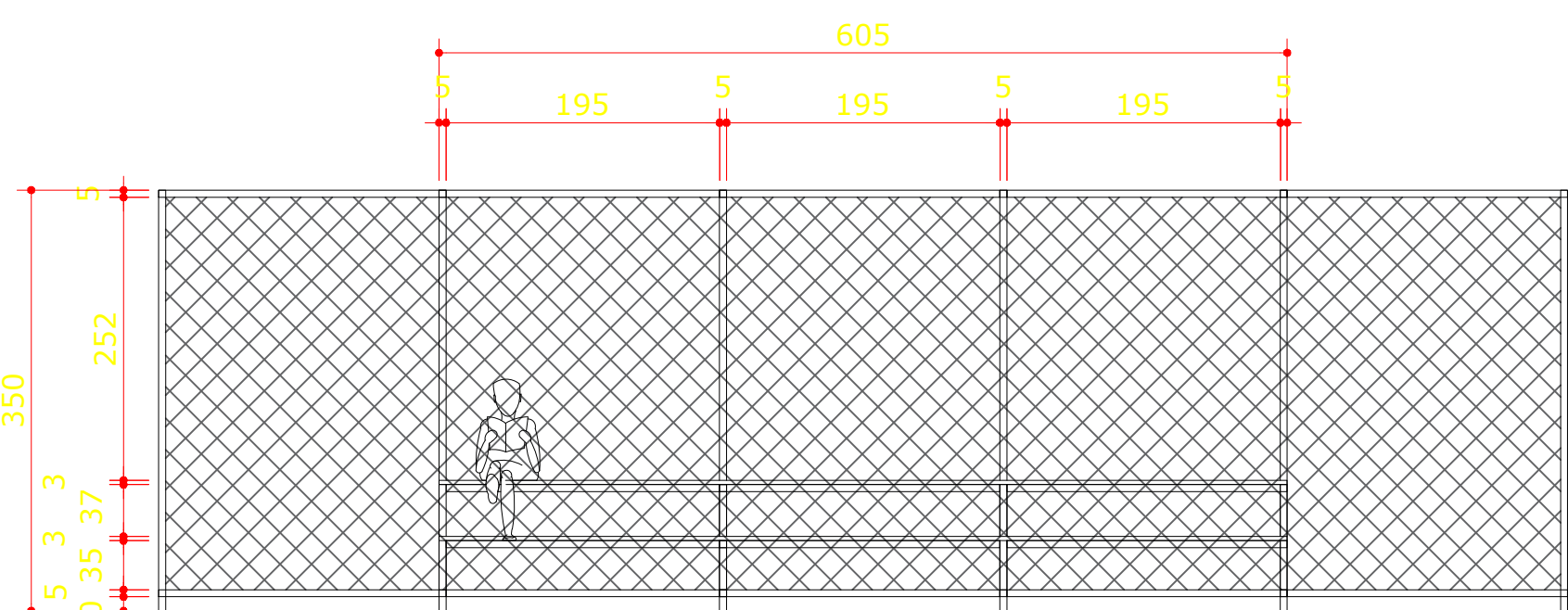
PLANTA TRAVE
ESCALA 1/50



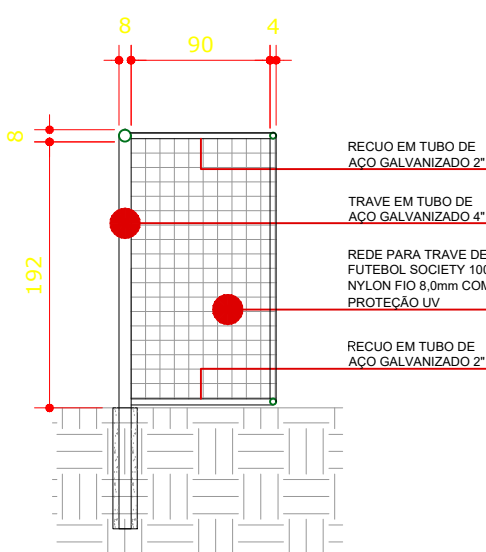
DETALHE D5 - VISTA LATERAL
ARQUIBANCADA
ESCALA 1/50



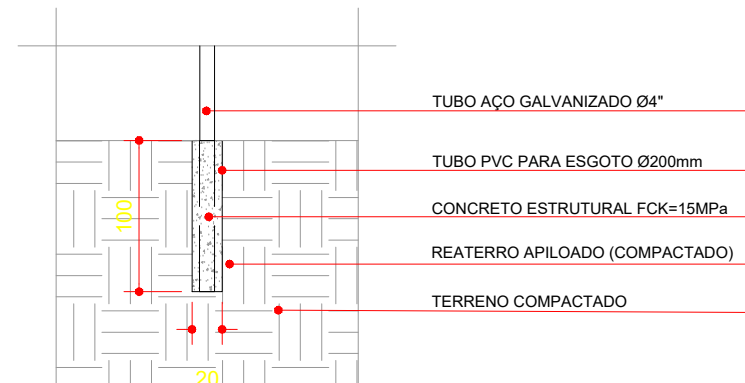
VISTA TRAVE
ESCALA 1/50



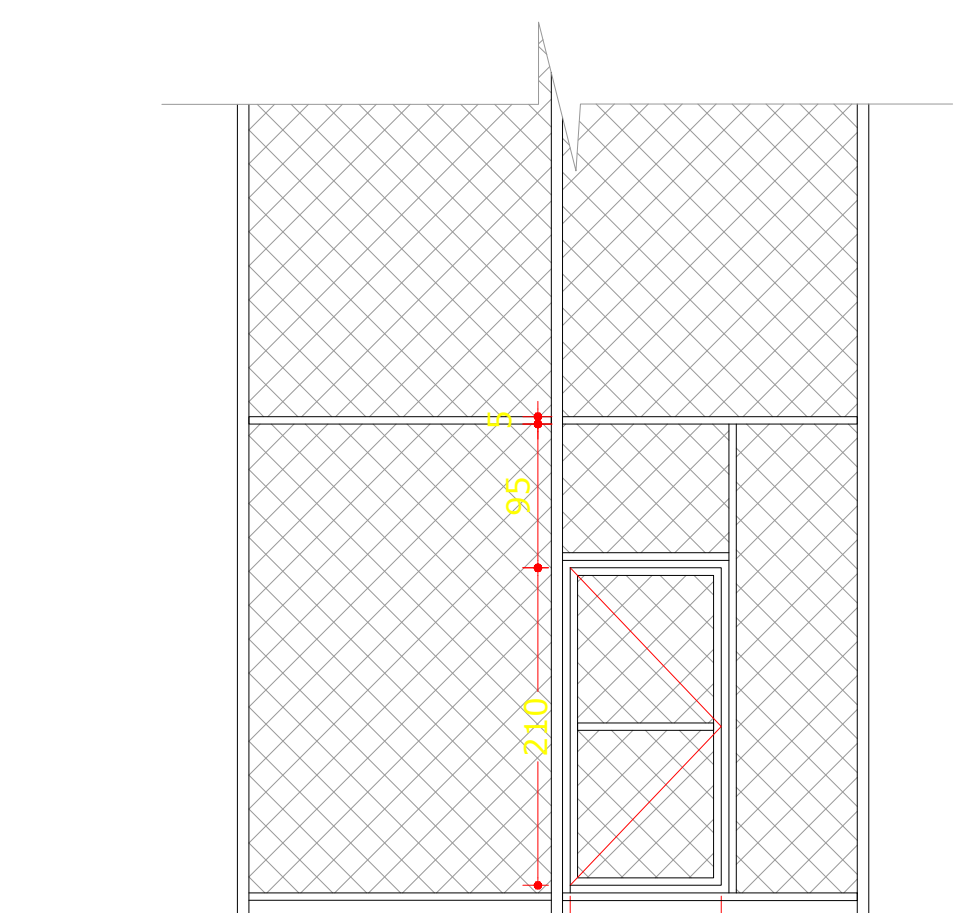
DETALHE D5 - VISTA FRONTAL
ARQUIBANCADA
ESCALA 1/50



CORTE TRAVE
ESCALA 1/50



FUNDAÇÃO TRAVE
ESCALA 1:50



VISTA PORTÃO ACESSO
ESCALA 1:50



PROJETO: Arquitetônico		PROPRIETÁRIO(A): PREFEITURA MUNICIPAL DE SULINA	
OBRA: MINI ARENA		RESPONSÁVEL TÉCNICO: Luciano S. Santiago	
CIDADE/UF: Sulina - Pr		Engenheiro(a) CREA-PR: 31.6790	
ESCALA: INDICADA	DESCRIÇÃO: Planta Baixa Vistas	DATA: Novembro/2020	
ÁREA DE INTERVENÇÃO: 624,00M²		TP:	
DESENHO: Natanuel Kremer	LOCAL: AVENIDA ANTONIO DIONÍSIO REICHART	PRANCHETA: 01/05	